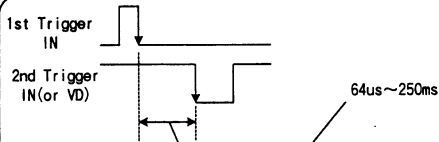
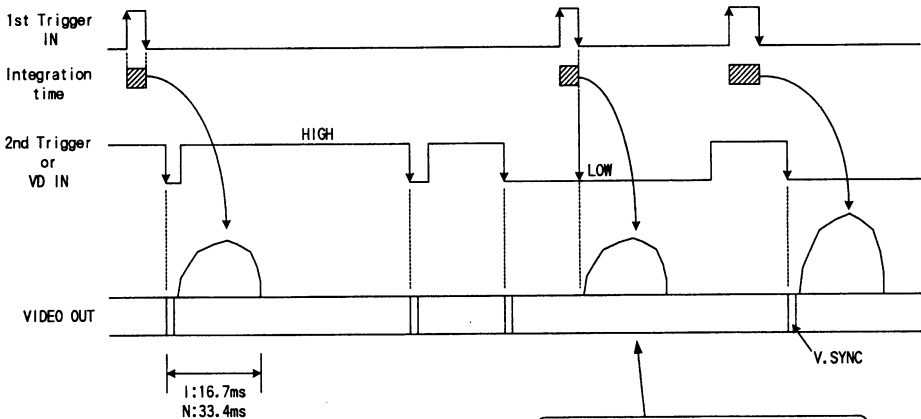


FD ON/OFF
 OFF ↔ ON
 ON Frame/field on demand
 Reset control trigger
 (ON only)
 OFF.... Normal shutter

VIDEO OUT/DC IN/SYNC CN

PIN NO.	Internal sync mode	External sync mode	
		HD/VD	Frame/field on demand Reset control
1	GND	GND	GND
2	+12V IN	+12V IN	+12V IN
3	GND(Vout)	GND(Vout)	GND(Vout)
4	Vout	Vout	Vout
5	-	GND(HD)	GND(HD)
6	-	HD IN	HD IN
7	-	VD IN	2nd Trigger or VD IN
8	-	-	GND(1st Trig)
9	-	-	1st Trigger IN
10	GND	GND	GND
11	+12V IN	+12V IN	+12V IN
12	-	GND(VD)	GND(2nd Trig or VD)

KP-F3-S2 Reset control Trigger



If 2nd Trigger pulse is Low when the 1st Trigger pulse is applied, the video signal output is obtained immediately. The vertical sync pulse is not included in this case.